

Accessibility and Inclusion Package

ETUG Spring Workshop 2026



ETUG Spring Workshop

May 28 & 29, 2026

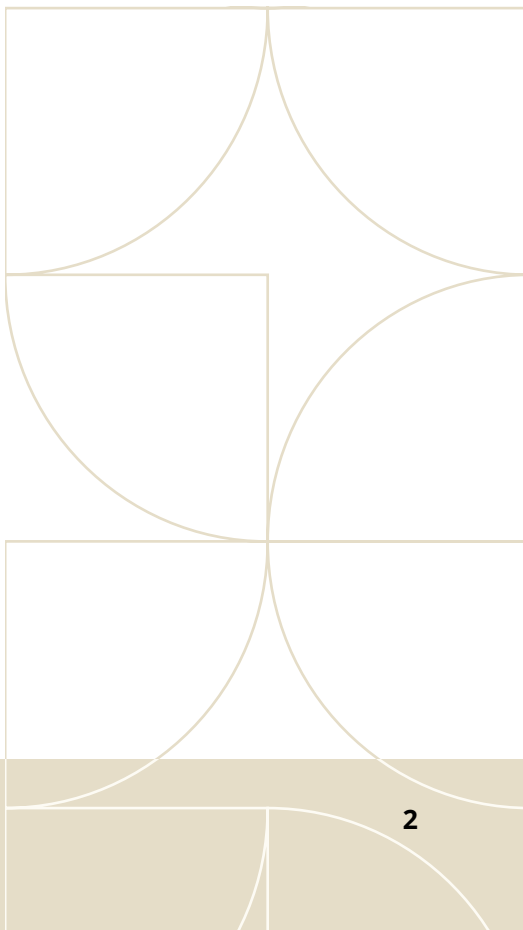
Langara College

Science & Technology Building
(T Building), Gallery Space

100 W 49th Ave, Vancouver, B.C.

Table of Contents

- Introduction** 3
- Accessible Practices and Procedures** 3
 - Accessibility Requests3
 - Hidden Disabilities Sunflower3
 - Registration Desk3
 - Text for Service3
 - Safety, Security, and Emergency Procedures4
 - Seating4
- Neuroinclusivity**5
 - Sensory Kits5
 - Headsets for Binaural Audio5
 - Fidget Tools5
 - Lap Blankets5
 - Quiet Room5
 - Sights, Sounds, and Engagement5
 - Calming Areas6
- Visual or Hearing Supports** 6
 - Alternative Formats6
 - Computer-Assisted Real-Time Translation and American Sign Language6
 - Assistive Devices6
- Other Supports** 6
 - Support Persons6
 - Service Animals7
- Venue Information**.....7
 - Washrooms8
 - Floors8
 - Chairs.....9
 - Light9
 - Event Add-ons9
 - Permit Parking..... 10
 - Langara Accessibility Shuttle 10
 - HandyDart Services 10
 - Mobility Device Rental & Repair 10
- Maps** 11
 - Langara Campus Map 11
 - Level 3 Library Building Map 12
 - Level 1 T Building Map 13
 - Level 2 T Building Map..... 14
- Contact Us**..... 15
- Feedback**..... 15
- License**..... 16



Introduction

Welcome to the ETUG Spring 2026 Workshop!

This document aims to provide you with important details about accessibility, inclusion, and our venue. If you have questions, please contact us at events@bccampus.ca. We are committed to ensuring your experience at the workshop is enjoyable and rewarding.

Accessible Practices and Procedures

Accessibility Requests

We personally manage each request and work directly with you to ensure your specific needs are met. If you have particular needs or preferences, you can communicate them in the registration form or contact us directly. We will be in touch to work with you.

Hidden Disabilities Sunflower

BCcampus is a proud member of the [Hidden Disabilities Sunflower](#) initiative. Hidden disabilities – such as neurodivergence, chronic illness, health conditions, learning disabilities, and sensory processing differences – are not always immediately apparent, yet they shape how many people experience learning, work, and public spaces.

If you wish to signal to others that you have a hidden disability, please take a Sunflower lanyard available at our registration desk. Staff wearing the Sunflower have been trained to respond respectfully and appropriately when support is requested.

Participation in the Sunflower program is always optional. Wearing or displaying the Sunflower does not require disclosure of a diagnosis – it simply signals a preference for understanding and consideration.

If you require any support at the event or have questions about the Sunflower Program please call/text Christy Foote, events manager at 778-999-0310 or email sunflower@bccampus.ca.



Registration Desk

The registration desk will be located in the Science and Technology (T) building on level 2 just beside the Gallery space.

Registration hours:

7:30 a.m. - 4:00 p.m. both days

Text for Service

We understand that sometimes it's not easy to flag down event staff or ask for assistance in a crowded room so we have introduced our convenient and discreet 'Text for Service' feature. For your comfort and convenience, simply send a text to Christy Foote, events manager, at 778-999-0310 with your request, and our event team will discreetly handle your needs. Whether it's a question, a special request, or assistance of any kind, we're here to make your experience seamless and stress-free.

Safety, Security, and Emergency Procedures

Langara College Campus Security: Call 4444 (from any internal phone) or 604-562-1011

Emergency Assistance Towers, or [Blue Phones](#), are strategically located throughout the campus and offer an immediate connection to Campus Security.

Emergency: 604-562-1011 and 911

If you have restricted mobility and have notified us, a dedicated staff member will be assigned to assist you in case of evacuation. You will be introduced to this person when you pick up your attendee badge.



Seating

We implement dedicated easy access and accessible seating for all in-person events. This includes seating in proximity to entrances and exits and near speakers, ensuring all attendees have an equal opportunity to fully participate.

Easy Access Seating

These seats are for people who want a spot near the front or by a door for any reason.



Mobility Aids



Neuroinclusivity

At our events we strive for neuroinclusivity to create an environment that supports individuals with diverse neurological needs. This includes help with our registration process, a personal venue tour, a buddy system during the event, sensory meals, and quiet spaces. Please let us know if there is something we can do to support you.

Sensory Kits

Sensory kits will be available to borrow from our event registration desk. Each sensory kit contains tools designed to support self-regulation and help reduce sensory overload.

Headsets for Binaural Audio

To support rest, focus, and relaxation, we will have wireless headsets available in the quiet room. These can be used to listen to binaural sounds—a type of audio designed to help calm the mind, improve concentration, or support sleep. You can choose from playlists on Spotify or use free apps like Brain.fm, Insight Timer, Binaural Beats Generator, or Atmosphere.

Fidget Tools

In the meeting area itself, you will find a small basket of fidget tools on the tables. Free to play and fidget, but please leave them behind for the next fidgeter.

Lap Blankets

We provide lap blankets to support attendee comfort and accessibility at events. These blankets help individuals who are sensitive to temperature changes and also for those who remain seated for long periods. You will find blankets throughout the venue space.

Quiet Room

We offer a designated quiet room designed to provide a peaceful and quiet environment for attendees seeking a break from the noise, lights, and other stimuli of our event spaces. The quiet room is intended to help you stay relaxed and focused so you can maximize your learning and networking opportunities. Please note that the quiet room is not intended for conversations or meetings but rather as a space to take a break and recharge.

Location:

- **May 28:** Library Building, Room L318
([Go to the Level 3 Library Map](#))
- **May 29:** Technology Building, Room T224
([Go to the Level 2 T Building Map](#))

Sights, Sounds, and Engagement

Langara is a bustling campus with many buildings and people, however, our event is in the T building which is a little more quiet than other buildings on campus. There are a lot of seating areas within an open concept space and you will generally see students studying in these areas. Each floor of the T building has various types of seating.

Inside our venue space, it will be quiet and people will be sitting and listening to presentations however, there will be times when there will be movement within space.

For session participation, on day 1 we will ask attendees to join the 90 minute table talk group session, where

participants can meet other attendees and have structured discussions on various topics in educational technology. All presentations will be either 15 mins or 30 mins.

Screen presentations are presented from a podium with a microphone. Please refer to the schedule for session descriptions to stay informed.

Calming Areas

There are some quiet spots throughout the T building due to the shape of the building so you may find quieter spots throughout the floors. Outside the T building at the south entrance, there is a green space with wooden chairs. Past the south parking lot, you will find a walking path that circles the adjoining Langara golf course for quiet walks.

Visual or Hearing Supports

Alternative Formats

We are dedicated to ensuring our information is accessible to everyone, and we understand you may require alternative formats to standard print to access information. If you require another format, please let us know and we will do our best to ensure your needs are met.

Computer-Assisted Real-Time Translation and American Sign Language

We provide sign-language interpreting (American Sign Language) or computer-assisted real-time translation (CART) on request. All recorded assets include captioning.

Assistive Devices

Many attendees use personal assistive devices to aid them in their daily lives, including communication, cognition, personal mobility, and medical aids. Our organization works closely with our audio-visual providers to ensure attendees have access to the necessary equipment. Additionally, all our event spaces are equipped with microphones and a house PA or speakers to help facilitate clear and accessible communication.

Other Supports

Support Persons

We recognize individuals with disabilities may require a support person to assist them with communication, mobility, personal care, or medical needs. We welcome attendees with disabilities to be accompanied by a support person at our events. The support person may be a paid professional, volunteer, family member, or friend and does not need to have any special training or qualifications. There is no fee for the support person; they are sponsored by BCcampus. If you will be bringing a support person to the event, please let us know in the accessibility field when you register.

If you do not have a support person but require extra assistance, volunteers and event staff will be available to assist during the event.

Service Animals

Service animals including guide dogs and support animals are welcome at our events. Langara has plenty of grass areas surrounding the campus and close to the T Building.



Venue Information

Langara has two entrances. The main entry is off W. 49th Avenue and there is an entrance off Ontario street.

[\(Go to the Campus Map\)](#)

Due to ongoing construction and traffic re-routing in the area, you may be re-routed to either of these entrances. Please check with Google Maps and watch for information from event organizers before heading out.

The T building has multiple levels. Our event will take place on the 2nd level of the building.

[\(Go to the Level 1 T Building Map\)](#)

[\(Go to the Level 2 T Building Map\)](#)

Which entrance and where you park will determine what you encounter but all travel routes include accessible ramps, elevators and power assisted doors. Some doors may be propped open but if not, you will need to press the activation button to open the doors, these are not motion sensor activated.

If you require any assistance at all, please text or call Christy 778-999-0310 and we will come to you and assist you in getting to the space.

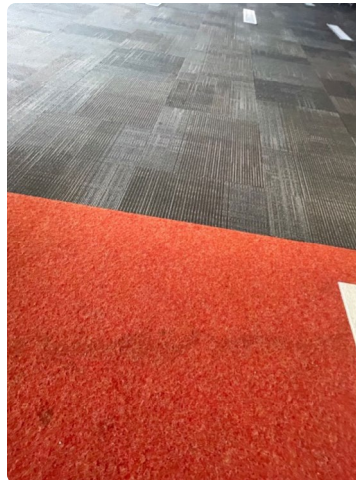
Washrooms

All-gender washrooms in the T building are located at 201, 203, 357, 457 and 557.



Floors

The T building has a few types of flooring: concrete and low-pile carpet. If you are using a mobility device please be aware of where these floorings meet. There is a difference in height and they may be hard to navigate with a mobility device. In the session space there are integrated air vents on the floor. Be mindful of these as they may catch mobility devices.



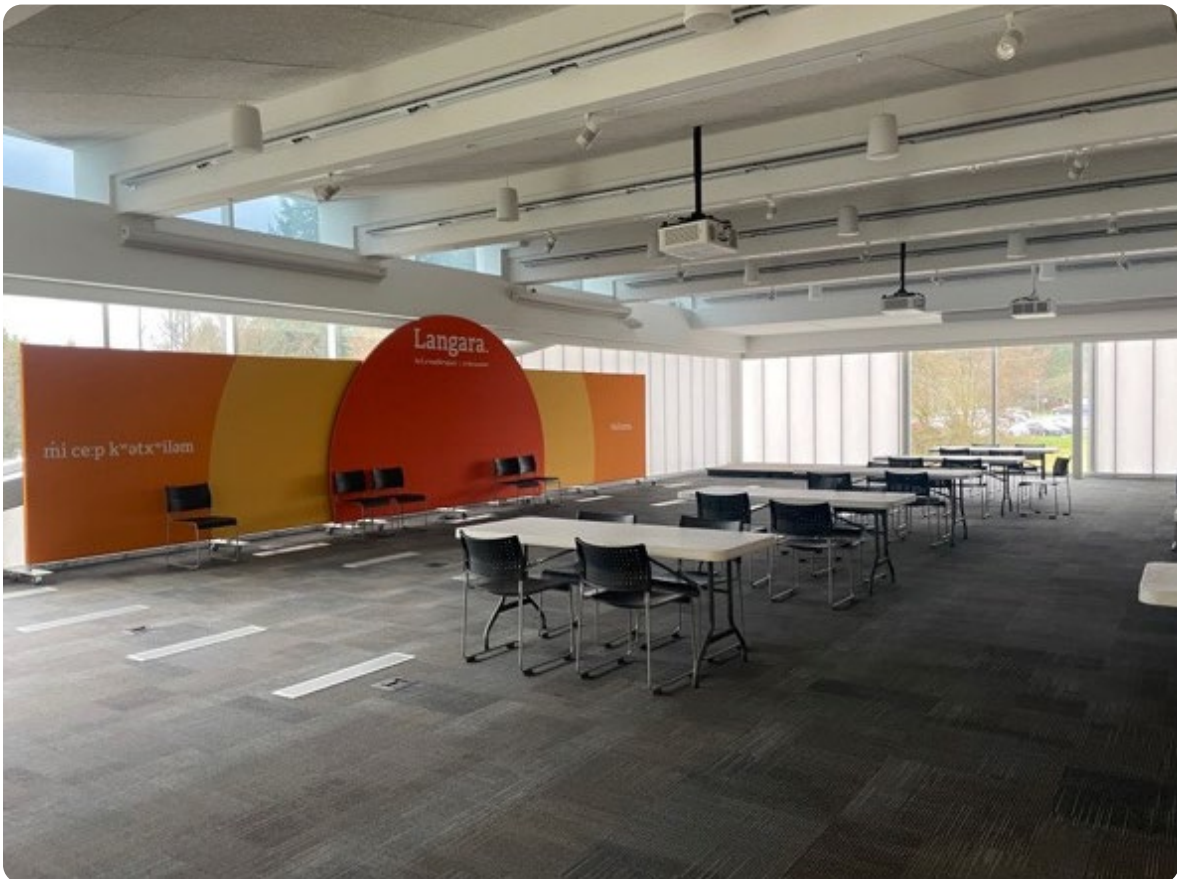
Chairs

Our venue space has plastic molded chairs. They are not on wheels and do not have arm rests. These may be difficult to move as they are on carpet. Let us know if you require a different seating option and we will do our best to accommodate.



Light

Our venue space has an abundance of natural light, however blinds will be partially closed when there are screen presentations. There is also recessed florescent lighting along with recessed pot lights. Let us know if you require a darker or brighter lit space.



Event Add-ons

The ETUG Spring Workshop will not be hosting a social event or any other activities outside of session days.

Permit Parking

There are a number of ground level parking areas around the building and one underground lot on campus. If you have a SPARC hanger, there are dedicated accessible parking spots available. Please [see the Campus map](#) for the most accessible pathway if you use a mobility device.

If you require assistance travelling from the parking lot to the venue, please call or text Christy at 778-999-0310 and we will come to you and assist.

Parking rates are in affect for permit parking spaces.

For further information on parking please visit [Langara's Parking Information](#) page.

Langara Accessibility Shuttle

Langara does not have an accessibility shuttle but the campus is fully accessible from TransLink stops and with HandyDart which specializes in door-to-door service.

HandyDart Services

HandyDART is TransLink's trusted door-to-door, shared-ride service for people who are unable to navigate conventional public transit without assistance. Please visit [HandyDART's website](#) for information on obtaining a pass and using this service.

If you require assistance, please contact the Access Transit Customer Care by calling 604.953.3680.

Mobility Device Rental & Repair

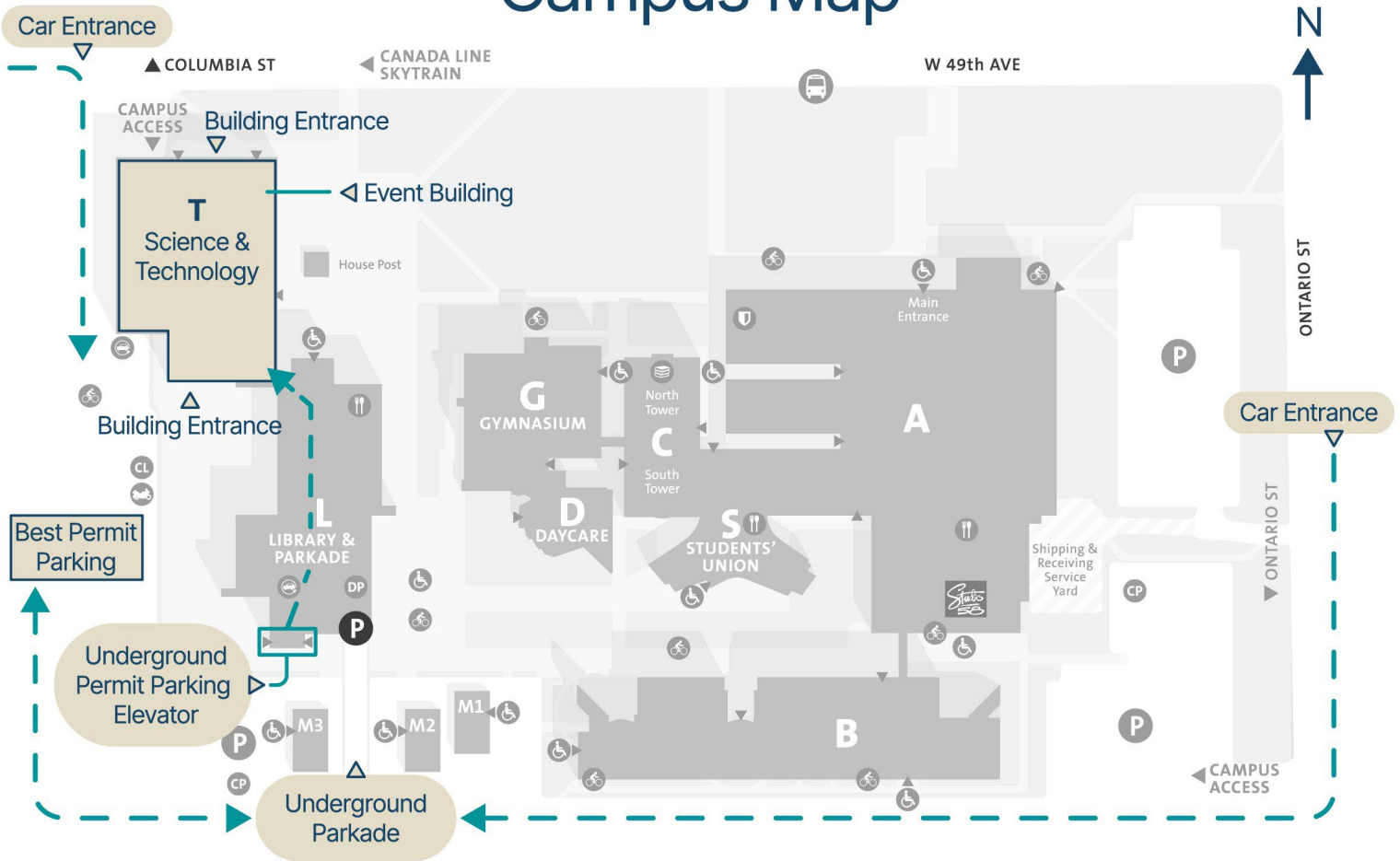
- [Macdonald's Home Health Care](#) 604-872-5496
- Wheelin' Mobility: Office: 604-200-0119 extension 901 | Cell: 778-654-7792
- [Advanced Mobility](#) 604-293-0002

Maps

Maps can also be found on [the Langara College website](#).

Langara Campus Map

Campus Map



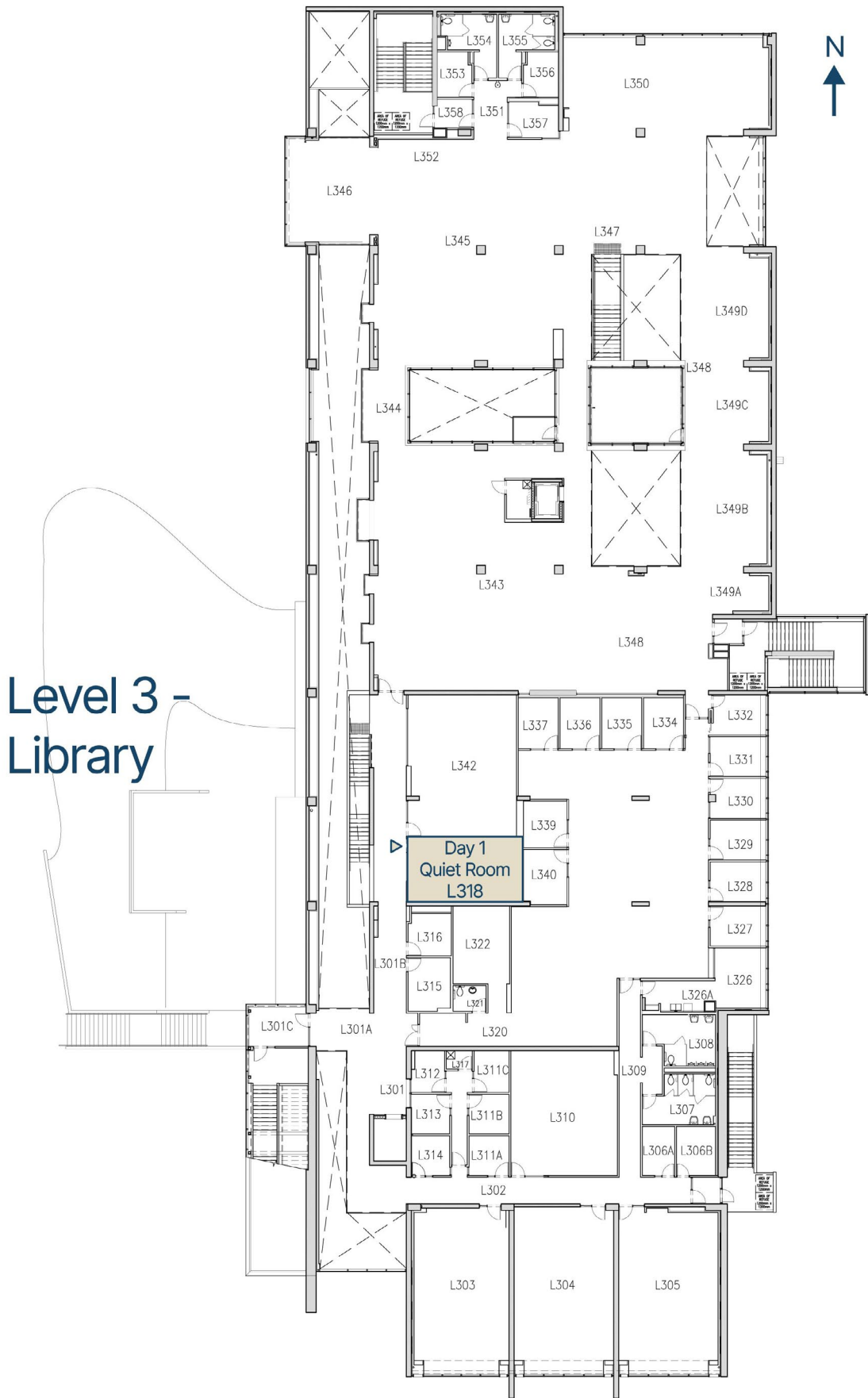
CAMPUS HOURS

Monday – Friday 8:00 am–10:00 pm
 Saturday & Sunday 8:00 am–7:00 pm
 Closed on Statutory Holidays
 For access or assistance when doors are locked, please call

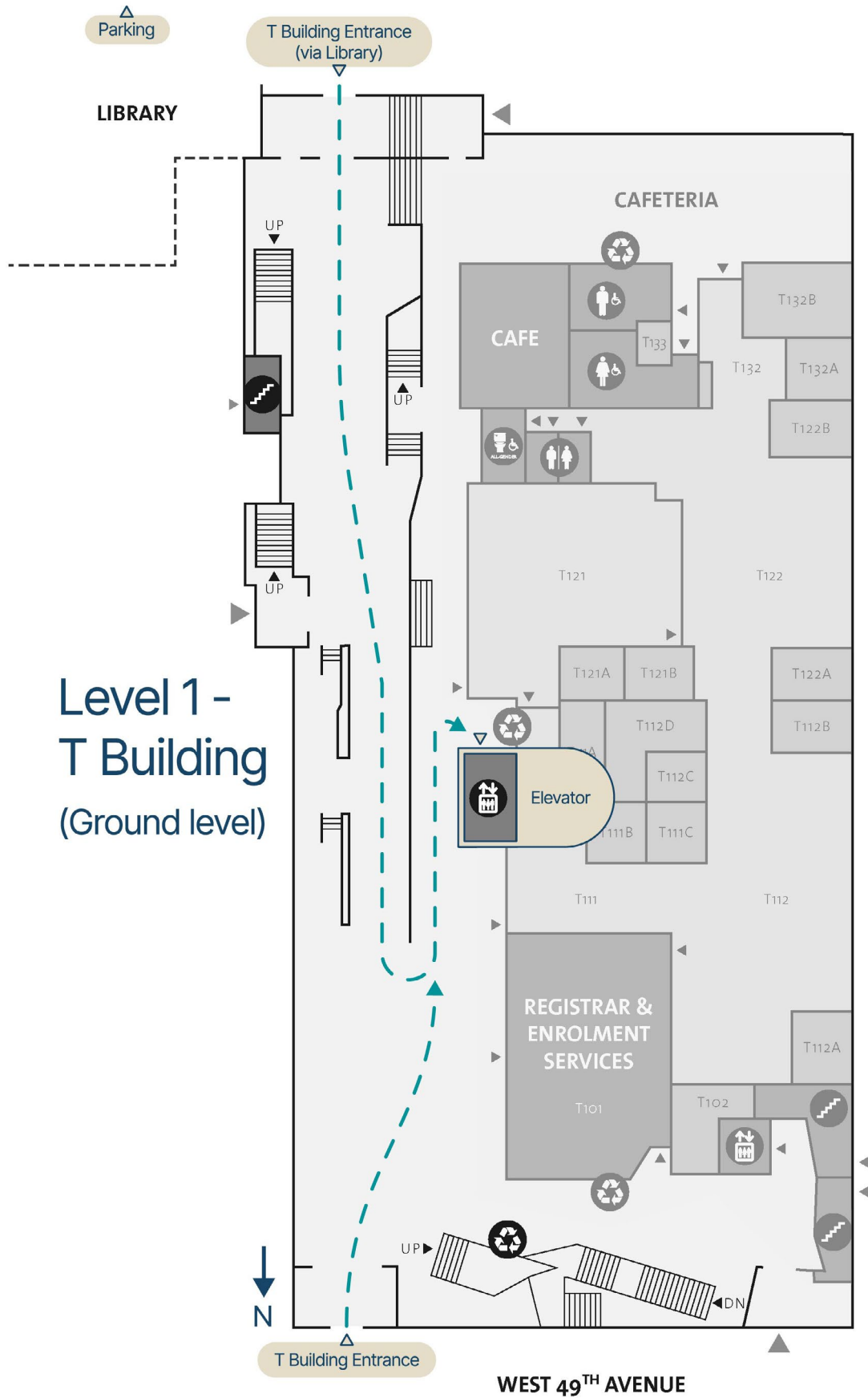
MAP LEGEND

- | | | |
|-------------------------|--------------------|--------------------|
| Accessible Area / Entry | Motorcycle parking | Commercial loading |
| Bike racks | Security | Daycare parking |
| Bus stop | Parking | Food service |

Level 3 Library Building Map



Level 1 T Building Map



Level 1 -
T Building
(Ground level)

Level 2 T Building Map



Contact Us

General questions: events@bccampus.ca

Christy Foote, events manager: cfoote@bccampus.ca

BCcampus support team: support@bccampus.ca

BCcampus communications team: communications@bccampus.ca

Feedback

As we are always learning, we welcome feedback and suggestions on this document. Please email events@bccampus.ca.



Creative Commons

This means you can share, redistribute, remix, and transform the material. (With the understanding that the citations referenced in this material are previously copyrighted by the original creators.)



Attribution

You must give appropriate credit, provide a link to the license, and indicate if changes were made. You may do so in any reasonable manner, but not in any way that suggests the licensor endorses you or your use.

